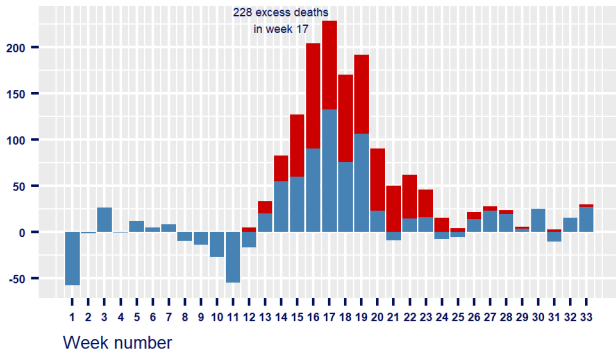


COVID-19 deaths of Welsh Care Home Residents —UPDATE 18 August

Since week 12, there have been 1410 excess deaths of adult care home residents in Wales compared to 2018/2019 average
Of these, 742 were attributed to Covid-19



Covid-19 deaths 2020 **Other excess deaths in 2020**



Data source: Care Inspectorate Wales

There have been 1,410 excess deaths of adult care home residents in Wales since week 12. Around three quarters of these deaths occurred in nursing homes. Of the total excess deaths, 742 (53%) were attributed to COVID-19. There were 3 new notifications of deaths attributed to COVID-19 in week 33.

There have been no new notifications of COVID-19 deaths in the last four weeks in 17 of the 22 Welsh local authorities. On average across Wales just under 3 care home residents with COVID-19 have died per 100 care home beds.

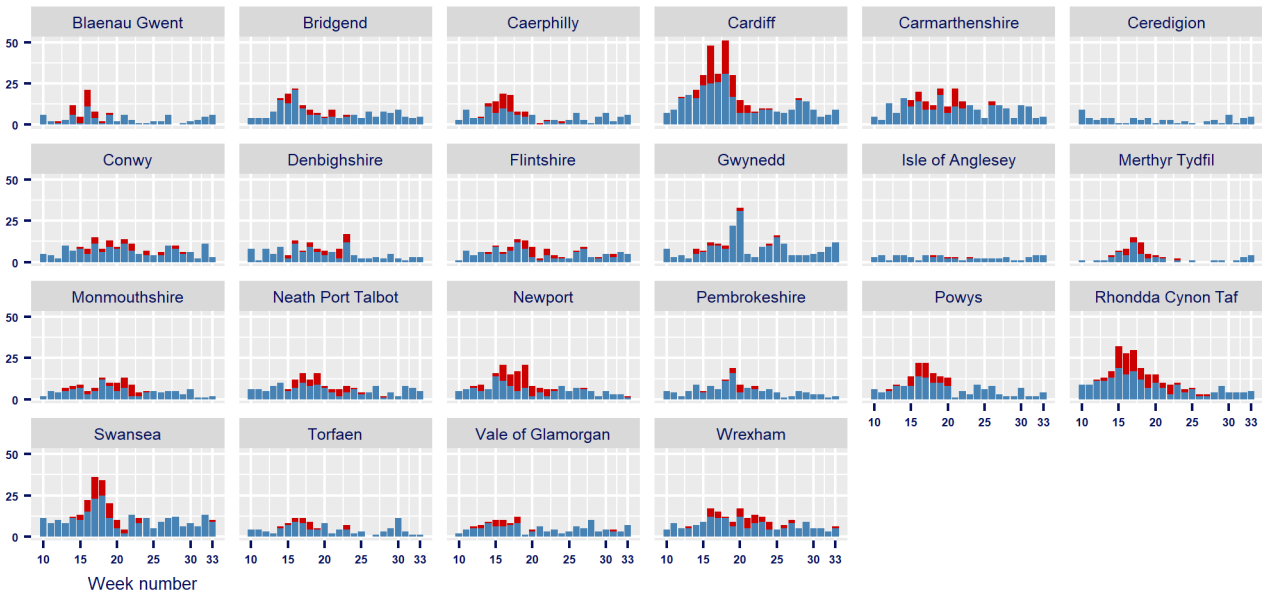
The data presented here are based on notifications of deaths to Care Inspectorate Wales and include deaths of care home residents in all locations except where indicated. The data include deaths of people with suspected or confirmed COVID-19 and are based on the date of notification to CIW, rather than on the date of death. Data are provided up to the week ending 14 August (week 33). Data on bed numbers were provided by CIW in early June.

The Welsh Government statistical release relating to this data is available here: <https://gov.wales/notifications-deaths-residents-related-covid-19-adult-care-homes-1-march-14-august-2020-html>

There were no notifications of care home resident deaths from COVID-19 in the four weeks to 14 August in 17 Welsh local authorities



Covid-19 deaths in all locations **Other deaths in all locations**



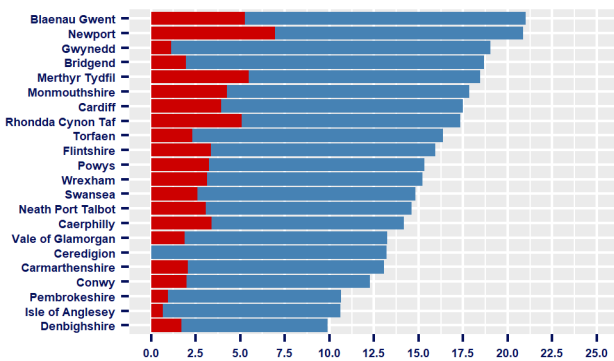
Data source: Care Inspectorate Wales licensed under the Open Government Licence

Across Wales 2.9 COVID-19 deaths of care home residents have been notified per 100 beds



For notifications between 1 March and 14 August 2020

Non COVID-19 deaths per 100 beds **COVID-19 deaths per 100 beds**



Weekly all-cause deaths for residents of Welsh care homes.....



.....in 2020 are close to the range of previous years

2018 **2019** **2020**

